



# MODELLO MIP50 MODEL MIP50

## CODICE CODE

MIP50G1/4

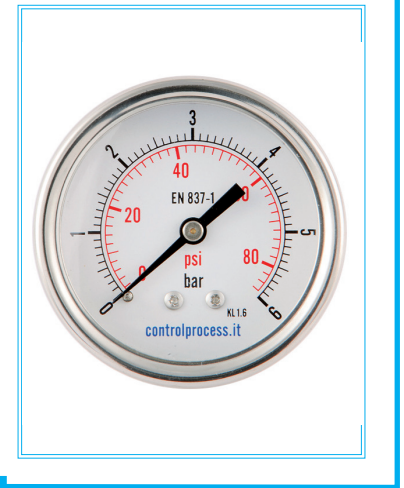
0/6

B/P

1

2

3



| 1 | CONNESSIONE AL PROCESSO<br>PROCESS CONNECTION | CODICE<br>CODE | 2 | SCALA<br>RANGE | CODICE<br>CODE | SCALA<br>RANGE | CODICE<br>CODE |
|---|---|----------------|---|----------------|----------------|----------------|----------------|
|   | 1/4" gas cilindrico                           | G1/4           |   | -1 ... 0       | -1/0           | 0 ... 10       | 0/10           |
|   | 1/4"npt                                       | N1/4           |   | -1 ... 0.6     | -1/0.6         | 0 ... 12       | 0/12           |
|   | 1/4" gas conico                               | R1/4           |   | -1 ... 1.5     | -1/1.5         | 0 ... 16       | 0/16           |
|   | 1/8" gas cilindrico                           | G1/8           |   | -1 ... 3       | -1/3           | 0 ... 20       | 0/20           |
|   | 1/8"npt                                       | N1/8           |   | -1 ... 5       | -1/5           | 0 ... 25       | 0/25           |
|   | 1/8" gas conico                               | R1/8           |   | -1 ... 9       | -1/9           | 0 ... 40       | 0/40           |
|   | Altro/another                                 | *              |   | -1 ... 15      | -1/15          | 0 ... 60       | 0/60           |
|   |   |                |   | -1 ... 24      | 0/24           | 0 ... 100      | 0/100          |
|   |   |                |   | 0 ... 0.6      | 0/0.6          | 0 ... 160      | 0/160          |
|   |   |                |   | 0 ... 1        | 0/1            | 0 ... 200      | 0/200          |
|   |   |                |   | 0 ... 1.6      | 0/1.6          | 0 ... 250      | 0/250          |
|   |   |                |   | 0 ... 2.5      | 0/2.5          | 0 ... 315      | 0/315          |
|   |   |                |   | 0 ... 4        | 0/4            | 0 ... 400      | 0/400          |
|   |   |                |   | 0 ... 6        | 0/6            | 0 ... 600      | 0/600          |
|   |   |                |   | Altro/another  |                |                | *              |
| 3 | UNITÀ DI MISURA<br>UNIT                       | CODICE<br>CODE |   |                |                |                |                |
|   | bar   | B              |   |                |                |                |                |
|   | bar / psi                                     | B/P            |   |                |                |                |                |
|   | psi   | P              |   |                |                |                |                |
|   | Kpa   | K              |   |                |                |                |                |
|   | Mpa   | M              |   |                |                |                |                |
|   | Altro/another                                 | *              |   |                |                |                |                |



- manometro molla bourdon
- materiale cassa in Acciaio Inox diametro cassa 50 mm
- esecuzione posteriore
- attacco al processo lega di rame
- elemento di misura lega di rame
- movimento lega di rame
- classe di precisione 1,6% f.s.
- quadrante alluminio bianco con fermo a zero
- indice alluminio
- trasparente in policarbonato
- normativa EN 837-1
- temperatura ambiente -40 ... +60°C fluido +80°C



- bourdon tube pressure gauge
- case Stainless Steel nominal size 50 mm
- center back
- process connection copper alloy
- pressure element copper alloy
- movement copper alloy
- accuracy class 1,6%
- dial aluminium white with pointer stop pin
- index aluminium
- window polycarbonate
- design EN 837-1
- temperature ambient -40 ... +60°C fluid +80°C