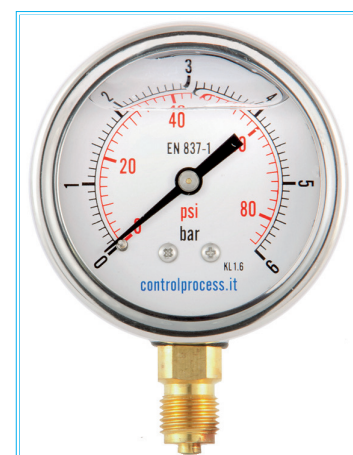
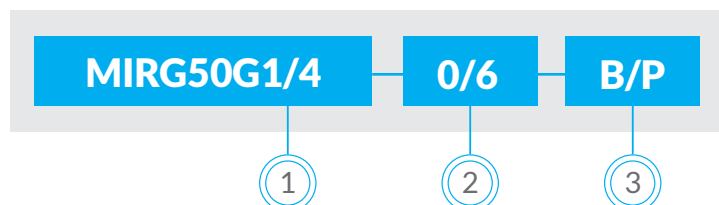




MODELLO MIRG50 MODEL MIRG50

CODICE CODE



1	CONNESSIONE AL PROCESSO PROCESS CONNECTION	CODICE CODE	2	SCALA RANGE	CODICE CODE	SCALA RANGE	CODICE CODE
	1/4" gas cilindrico	G1/4		-1 ... 0	-1/0	0 ... 10	0/10
	1/4" npt	N1/4		-1 ... 0.6	-1/0.6	0 ... 12	0/12
	1/4" gas conico	R1/4		-1 ... 1.5	-1/1.5	0 ... 16	0/16
	1/8" gas cilindrico	G1/8		-1 ... 3	-1/3	0 ... 20	0/20
	1/8" npt	N1/8		-1 ... 5	-1/5	0 ... 25	0/25
	1/8" gas conico	R1/8		-1 ... 9	-1/9	0 ... 40	0/40
	Altro/another	*		-1 ... 15	-1/15	0 ... 60	0/60
				-1 ... 24	0/24	0 ... 100	0/100
				0 ... 0.6	0/0.6	0 ... 160	0/160
				0 ... 1	0/1	0 ... 200	0/200
				0 ... 1.6	0/1.6	0 ... 250	0/250
				0 ... 2.5	0/2.5	0 ... 315	0/315
				0 ... 4	0/4	0 ... 400	0/400
				0 ... 6	0/6	0 ... 600	0/600
				Altro/another	*		*
3	UNITÀ DI MISURA UNIT	CODICE CODE					
	bar	B					
	bar / psi	B/P					
	psi	P					
	Kpa	K					
	Mpa	M					
	Altro/another	*					



<ul style="list-style-type: none"> manometro molla bourdon 	<ul style="list-style-type: none"> bourdon tube pressure gauge
<ul style="list-style-type: none"> materiale cassa in Acciaio Inox diametro cassa 50 mm con riempimento di glicerina 	<ul style="list-style-type: none"> case Stainless Steel nominal size 50 mm with glycerine
<ul style="list-style-type: none"> esecuzione radiale 	<ul style="list-style-type: none"> lower mount
<ul style="list-style-type: none"> attacco al processo lega di rame 	<ul style="list-style-type: none"> process connection copper alloy
<ul style="list-style-type: none"> elemento di misura lega di rame 	<ul style="list-style-type: none"> pressure element copper alloy
<ul style="list-style-type: none"> movimento lega di rame 	<ul style="list-style-type: none"> movement copper alloy
<ul style="list-style-type: none"> classe di precisione 1,6% f.s. 	<ul style="list-style-type: none"> accuracy class 1,6%
<ul style="list-style-type: none"> quadrante alluminio bianco con fermo a zero 	<ul style="list-style-type: none"> dial aluminium white with pointer stop pin
<ul style="list-style-type: none"> indice alluminio 	<ul style="list-style-type: none"> index aluminium
<ul style="list-style-type: none"> trasparente in policarbonato 	<ul style="list-style-type: none"> window polycarbonate
<ul style="list-style-type: none"> normativa EN 837-1 	<ul style="list-style-type: none"> design EN 837-1
<ul style="list-style-type: none"> temperatura ambiente -20 ... +60°C fluido +60°C 	<ul style="list-style-type: none"> temperature ambient -20 ... +60°C fluid +60°C